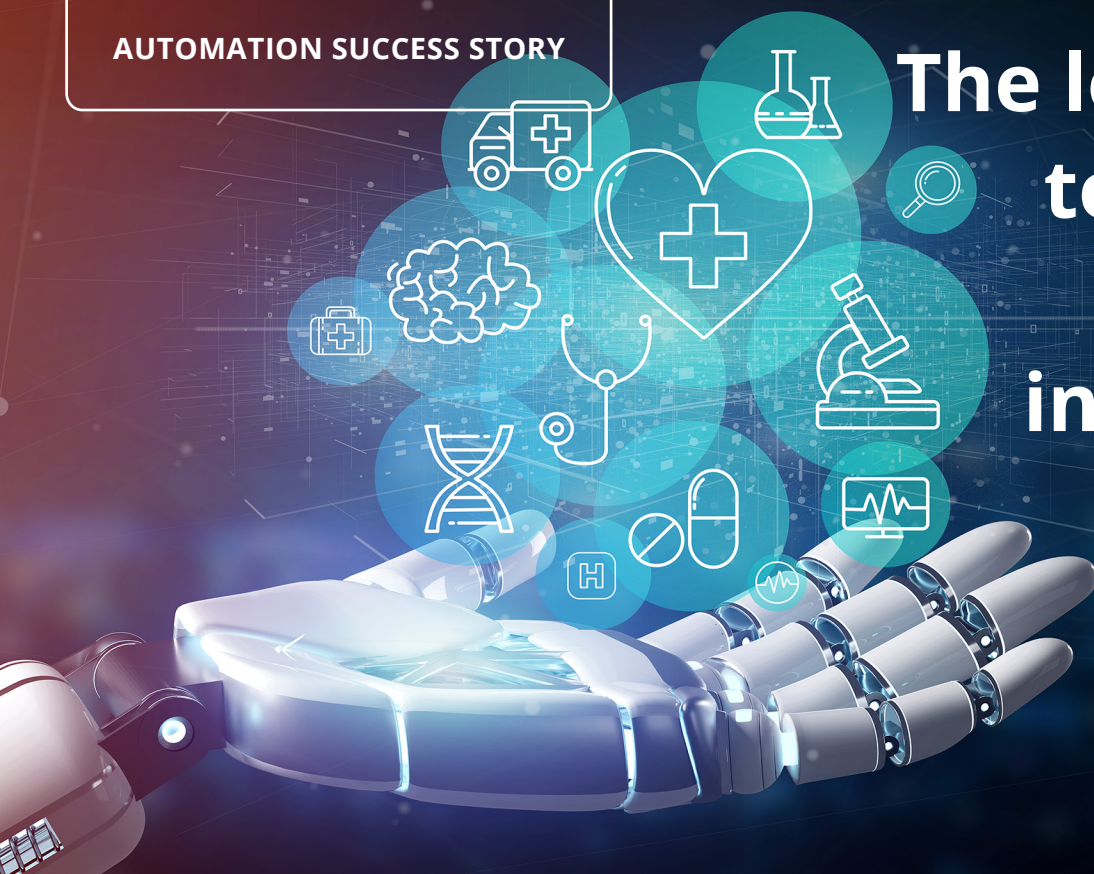


The low-risk path to biomedical production in record time



Medical Device Diagnostic Manufacturing

Situation

A medical device diagnostic manufacturer needed to rapidly replicate an in-house designed manufacturing tool to ramp up production.

Problem

A complete tool with multiple control systems needed to be an exact copy but there was limited documentation. Customer engineers were busy with new product development and tool commissioning, and the production ramp-up required many weeks of engineering support.

Solution

- Identified gaps in customer documentation
- Identified and corrected a BOM error that eliminated redundant components and reduced the cost significantly
- Worked with the customer's engineers to create an accurate and complete documentation package while the tool was built
- Captured unspoken design intent requirements
- Took over all responsibility for the tool's commissioning and production ramp-up
- Created tooling and software to facilitate system testing
- Shortened the system debug and alignment time from 8 to 3 weeks



About Owens Design

From startups to Fortune 500 manufacturers, you can minimize risk, accelerate time-to-market, and scale high-tech production with custom design, build and turnkey manufacturing from Owens Design. OEMs meet impossible customer demands with production-ready prototypes designed and built with Owens Design. Manufacturers rapidly scale production of new products with custom automation developed by Owens. Since 1983, Owens has designed and built thousands of tools with 100% delivery, through highly experienced engineers, a proven product development process and customer commitment. Owens Design has deep expertise in semiconductors, biomedical, renewable energy, batteries, displays, and emerging technologies.

[Get started with a custom automation review](#)

